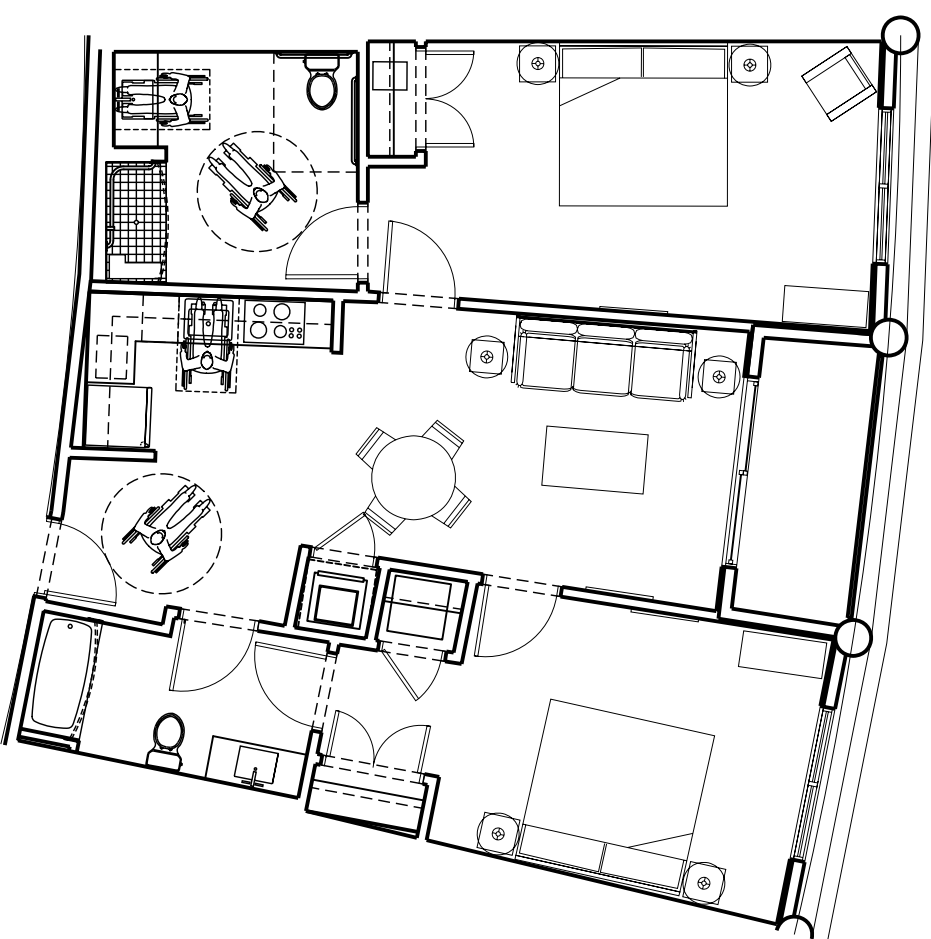


# "MONA LISA AT CELEBRATION" UNIT 2A OUT ROLL-IN-SHOWER



FLOOR PLAN LAYOUT

## DRAWING INDEX

CV	INDEX, UNIT DATA
A1	DIMENSIONED FLOOR PLAN
A2	FLOOR PLAN, DOOR & WINDOW SCHEDULE, AHU CLOSET DETAIL, AND PARTITION SCHEDULE
A3	UNIT SECTIONS AND DETAILS
A4	BLOCKING DETAIL FOR TV, DRAPES, AND HEADBOARD
A5	FINISH, POWER, AND CEILING PLAN
A6	MECHANICAL & PLUMBING PLAN
A7	KITCHEN PLAN AND ELEVATIONS
A8	BATHROOM 2 PLAN AND ELEVATIONS
A9	BATHROOM 1 PLAN AND ELEVATIONS

## UNIT DATA

UNIT AREA (sq ft)	UNIT BALCONY (sq ft)	TOTAL AREA (sq ft)	NPT OF UNITS (ALL HBS)	NPT OF UNITS AREA A (ALL HBS)	NPT OF UNITS AREA B (ALL HBS)	NPT OF UNITS AREA C (ALL HBS)	NPT OF UNITS AREA D (ALL HBS)	NPT OF UNITS (IN BLDG)	UNIT BEHINDS	UNIT BATHS
147	62	209	0	1	0	0	1	2	2	2

## GENERAL NOTES

- THE DESIGNER SHALL NOT BE HELD RESPONSIBLE FOR WORK NOT IN ACCORDANCE WITH THESE DOCUMENTS OR FOR MISINTERPRETATION OF THE DRAWINGS OR FOR UNSATISFACTORY WORK DONE BY THE CONTRACTOR. IN THE EVENT THAT A PROBLEM DOES ARISE FROM THESE DOCUMENTS, THE DESIGNER SHOULD BE CONTACTED TO MAKE ADJUSTMENTS OR CLARIFICATION IF NEEDED, PRIOR TO COMMENCEMENT OF WORK.
- CONTRACTOR SHALL BE HELD RESPONSIBLE FOR ALL INTERIOR AND EXTERIOR FINISHES, INCLUDING MATERIALS AND INSTALLATION PRACTICES. A GOOD QUALITY PRODUCT WITH REASONABLE UPKEEP REQUIREMENTS IS REQUIRED.
- THE GENERAL CONTRACTOR SHALL VERIFY AND COORDINATE ALL DIMENSIONS WITH SHOP ELECTRICAL, MECHANICAL, PLUMBING, AND STRUCTURAL DRAWINGS AS APPLICABLE PRIOR TO START OF CONSTRUCTION.
- DO NOT SCALE DRAWINGS FOR DIMENSION PURPOSES. IF ANY QUESTIONS ARISE NOTIFY THE DESIGNER AT ONCE FOR RESOLUTION PRIOR TO PROCEEDING.
- THIS PROJECT IS FULLY UNDER THE JURISDICTION, PROVISIONS AND RULES OF THE FLORIDA BUILDING CODE, THE AMERICANS WITH DISABILITIES ACT, FLORIDA ACCESSIBILITY CODE AND APPLICABLE LOCAL CODES AND ORDINANCES. TO THE BEST OF MY KNOWLEDGE THESE PLANS AND SPECIFICATIONS ARE IN COMPLIANCE WITH THE MINIMUM STANDARDS OF THE ABOVE REFERENCED CODES.

## CONTROL DATE

05 / 11 / 2001

REV. DATE	COMMENT
2/06/01	IN UNITS LIVING RM1 CHANGE FAN TO LIGHT, STANDARDIZED VANITY SIZES, CABINET STYLE FINISH, AND HARDWARE. VANITY LIGHT, EXHAUST FAN, SPLIT ABY. KITCHEN 11'-3" DEEP CORNER WALL DETAIL, TOWER BARS REMOVED. BATH TILE TO 6x6 LIKE KITCHEN. 4" BACK-SPLASH 6" KITCHEN 6" BATH BLKS FOR BED, DRAPES, 18" DU BEDS MOVED TO OUTER WALL. BATHRM W/ TUB & SHOWER REMOVE CURTAIN ROD & SHOWER HEAD 6" TUB, OUTLET 6" KITCHEN
2/16/01	REVISED TRIM CALLOUT, WALL AND CEILING FINISH, RCP KEY NOTES, CHANGED Foyer & HALLWAY'S LIGHTS FROM L5 TO L1, REMOVE ELEC. DETAIL 5, KITCHEN BACKSPLASH BATHRM, TILE LAYOUT, SCAP DISH
5/11/01	REVISED KITCHEN LAYOUTS PER C. SUPPLY COMPANY. UPDATED APPLIANCE CALLOUTS, ADDED DATA VOICE JACK, REVISE DRAPES BLKS. DETAIL, ADD VENT ABY. COOKTOP AND LOCATED MICROVAVE AT COUNTER FOR ONLY H/C UNITS, ADDED BLOCKING FOR SHOWER ENCLOSURE, CHANGE CEILING FROM 5/8" GYPSUM TO 1/2", ADDED WIRE SHELF TO WASHER/ DRYER CLOSET W/ND DOOR LAYOVER, ADDED SAFE TO CLOSET

REV	1-25-2006
FOR	8-17-2006
CHK	12-14-2006
APP	1-02-2007
DES	01-16-2007
CHK	01-23-2007
APP	01-26-2007
DES	05-15-2007
ENG	05-15-2007

C.B. DRAFTING DESIGN, INC.  
CONTACT NUMBER (321) 848-8831  
FAX / PHONE NUMBER (321) 759-6074  
Christopher Bergeron

SYNERGY GROUP S.E., INC.  
2466 WEST SAND LAKE RD. ORLANDO, FL. 32809  
OFFICE NUMBER 407-812-6510 FAX NUMBER 407-812-6511

INTERIOR FINISH AND DESIGN FOR:  
"MONA LISA AT CELEBRATION"  
UNIT 2A OUT  
ROLL-IN-SHOWER

CAD CODE:  
DRAWN BY: CDB  
CHECKED BY: CDB  
DATE: 05/11/01  
CV 10