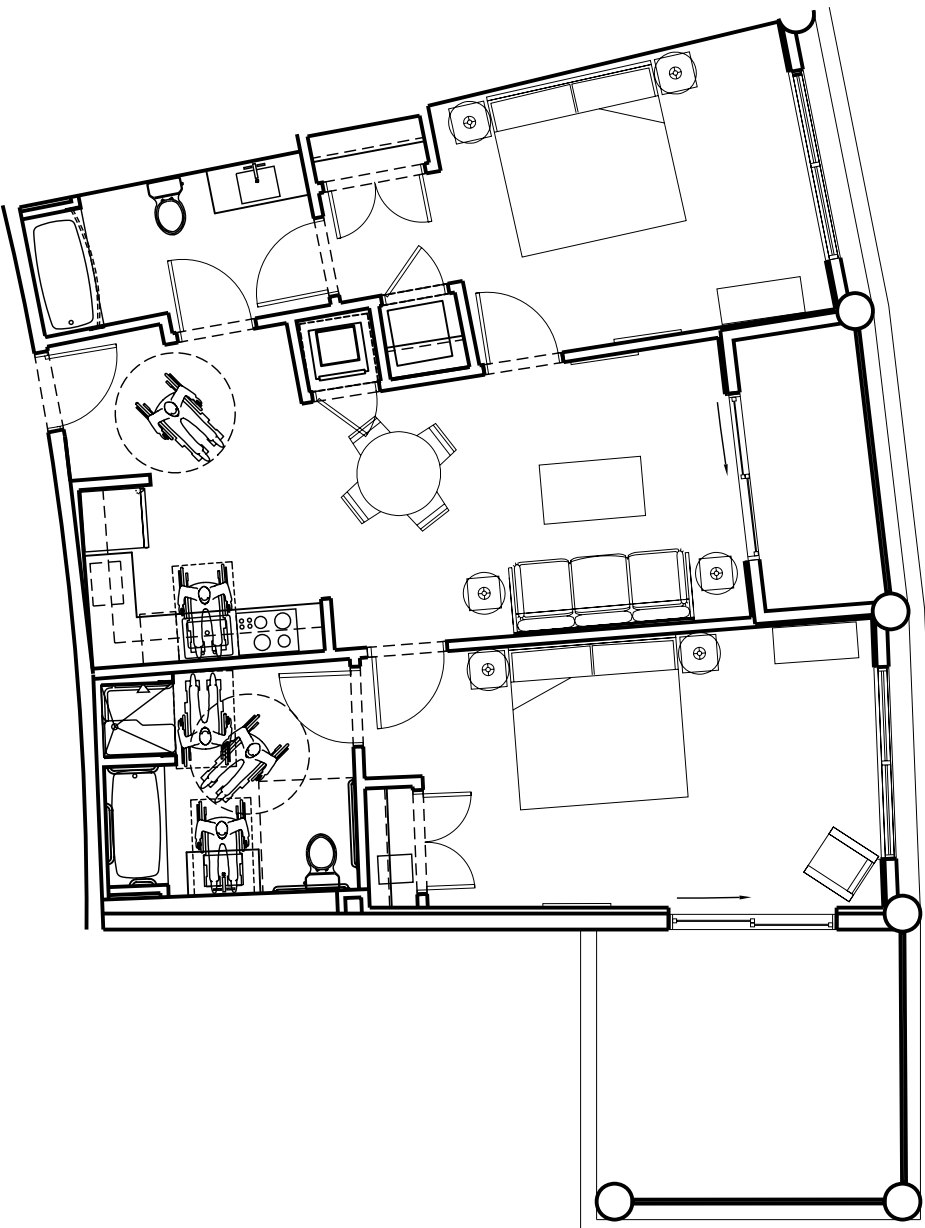
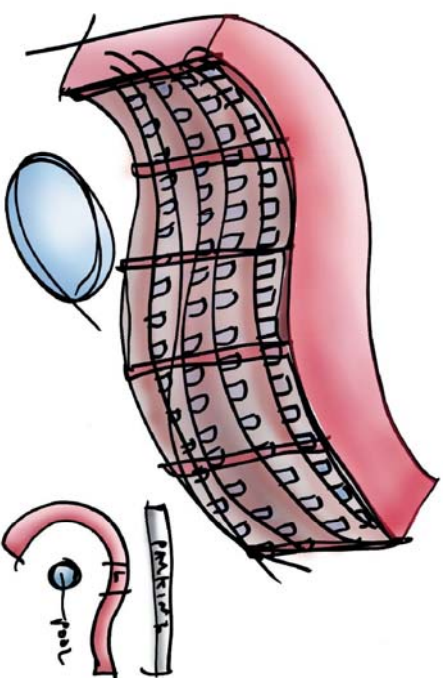


FLOOR PLAN LAYOUT



"MONA LISA AT CELEBRATION"  
UNIT 2B OUT HC



DRAWING INDEX

CV	INDEX, UNIT DATA
A1	DIMENSIONED FLOOR PLAN
A2	FLOOR PLAN, DOOR & WINDOW SCHEDULE, AHU CLOSET DETAIL, AND PARTITION SCHEDULE
A3	UNIT SECTIONS AND DETAILS
A4	BLOCKING DETAIL FOR TY, DRAPES, AND HEADBOARD
A5	FINISH, POWER, AND CEILING PLAN
A6	MECHANICAL & PLUMBING PLAN
A7	KITCHEN PLAN AND ELEVATIONS
A8	BATHROOM 2 PLAN AND ELEVATIONS
A9	BATHROOM 1 PLAN AND ELEVATIONS

UNIT DATA

UNIT AREA (SQ')	UNIT AREA (SQ')	UNIT OF ALL HS	UNIT OF ALL HS	UNIT OF ALL HS	UNIT OF ALL HS	UNIT OF ALL HS	UNIT OF ALL HS	UNIT OF ALL HS	UNIT OF ALL HS	UNIT OF ALL HS	UNIT OF ALL HS	UNIT OF ALL HS
292	232	1524	1	0	0	0	0	1	2	2		

GENERAL NOTES

1. THE DESIGNER SHALL NOT BE HELD RESPONSIBLE FOR WORK NOT IN ACCORDANCE WITH THESE DOCUMENTS OR FOR MISINTERPRETATION OF THE DRAWINGS OR FOR UNSATISFACTORY WORK DONE BY THE CONTRACTOR. IN THE EVENT THAT A PROBLEM DOES ARISE FROM THESE DOCUMENTS, THE DESIGNER SHOULD BE CONTACTED TO MAKE ADJUSTMENTS OR CLARIFICATION IF NEEDED, PRIOR TO COMMENCEMENT OF WORK.
2. CONTRACTOR SHALL BE HELD RESPONSIBLE FOR ALL INTERIOR AND EXTERIOR FINISHES, INCLUDING MATERIALS AND INSTALLATION PRACTICES. A GOOD QUALITY PRODUCT WITH REASONABLE UPKEEP REQUIREMENTS IS REQUIRED.
3. THE GENERAL CONTRACTOR SHALL VERIFY AND COORDINATE ALL DIMENSIONS WITH SHOP ELECTRICAL, MECHANICAL, PLUMBING, AND STRUCTURAL DRAWINGS AS APPLICABLE PRIOR TO START OF CONSTRUCTION.
4. DO NOT SCALE DRAWINGS FOR DIMENSION PURPOSES. IF ANY QUESTIONS ARISE NOTIFY THE DESIGNER AT ONCE FOR RESOLUTION PRIOR TO PROCEEDING.
5. THIS PROJECT IS FULLY UNDER THE JURISDICTION, PROVISIONS AND RULES OF THE FLORIDA BUILDING CODE, THE AMERICANS WITH DISABILITIES ACT, FLORIDA ACCESSIBILITY CODE AND APPLICABLE LOCAL CODES AND ORDINANCES. TO THE BEST OF MY KNOWLEDGE THESE PLANS AND SPECIFICATIONS ARE IN COMPLIANCE WITH THE MINIMUM STANDARDS OF THE ABOVE REFERENCED CODES.

CONTROL DATE

05 / 11 / 2001

REV. DATE	COMMENT
2/06/01	IN UNITS LIVING RM1 CHANGE FAN TO LIGHT, STANDARDIZED VANITY SIZES, CABINET STYLE FINISH, AND HARDWARE. VANITY LIGHT, EXHAUST FAN, SPLIT ABY. KITCHEN 1'-3" DEEP CORNER WALL DETAIL, TOWER BARS REMOVED. BATH TILE TO 6x6 LIKE KITCHEN. 4" BACK-SPLASH 6 KITCHEN 4 BATH BLKS FOR BED, DRAPES, 18" DU BEDS MOVED TO OUTER WALL. BATHRM W/ TUB & SHOWER REMOVE CURTAIN ROD & SHOWER HEAD 6 TUB, OUTLET 6 KITCHEN
2/16/01	REVISED TRIM CALLOUT, WALL AND CEILING FINISH, RCP KEY NOTES, CHANGED Foyer & HALLWAY'S LIGHTS FROM 15 TO 11. REMOVE ELEC. DETAIL 5, KITCHEN BACKSPLASH BATHRM, TILE LAYOUT, SCAP DISH
5/11/01	REVISED KITCHEN LAYOUTS PER C. SUPPLY COMPANY, UPDATED APPLIANCE CALLOUTS, ADDED DATA VOICE JACK, REVISE DRAPE BLKG. DETAIL, ADD VENT ABY. COOKTOP AND LOCATED MGRQUAVE AT COUNTER FOR ONLY H/C UNITS, ADDED BLOCKING FOR SHOWER ENCLOSURE, CHANGE CEILING FROM 5/8" GYPBULT TO 1/2" REMOVED F.S., ADDED WIRE SHELF TO WASHER/ DRYER CLOSET, ADDED GRAB BAR AT TUB, W/D DOOR LIVERY, ADDED SAFE TO CLOSET

1-25-2006  
2-11-2006  
2-14-2006  
L1001-01-01-2007  
01-16-2007  
L001-01-01-2007  
01-23-2007  
L001-01-01-2007  
05-11-2007  
ENG

C.B. DRAFTING DESIGN, INC.  
CONTACT NUMBER  
(321) 848-8831  
FAX / PHONE NUMBER  
(321) 759-6074  
Christopher Bergeron

SYNERGY GROUP S.E., INC.  
2466 WEST SAND LAKE RD.  
ORLANDO, FL. 32809  
OFFICE NUMBER 407-812-6510 FAX NUMBER 407-812-6511

INTERIOR FINISH AND DESIGN FOR:  
"MONA LISA AT CELEBRATION"  
UNIT 2B OUT HC

CAD CODE:  
DRAWN BY: CDB  
CHECKED BY: CDB

94T NO  
CV 10